



EDMONTON
CHRISTIAN
SCHOOLS

The Edmonton Society for Christian Education

2024

AGM

June 4 • 7:30 PM
ECHS Gymnasium

Notice of Meeting

The Annual General Meeting (AGM) of the Edmonton Society for Christian Education will be conducted on Tuesday, June 4th, 2024, at 7:30 PM in the Edmonton Christian High School Gymnasium.

Edmonton Christian High School
14304 109 Avenue NW
Edmonton, AB T5N 1H6

Active ESCE members are welcome to participate in the Annual General Meeting and vote.

Ballots and voting instructions will be presented to members in advance of the vote at the AGM.

Votes on business matters may be taken by a show of hands. The special resolution vote, the budget, and the election of directors will be conducted using a written ballot.

To qualify as an active member on any given date, an individual must have both submitted the summary statement of faith form and made the minimum donation within a designated timeframe. This timeframe extends from the specified date back to 4:00 p.m. on the previous year's September 1st.

Meeting Package Content

Notice of Meeting.....	2
2024 ESCE Annual General Meeting Agenda.....	4
May 29, 2023, AGM Minutes.....	6
Board Nominees.....	8
Special Resolution - Bylaw Revision.....	13
Treasurer Report.....	18
2024-2025 Service Recognition.....	25
Board Chair Report.....	26
Executive Director Report.....	28
Principals' Report.....	33
Absentee Ballot #1 - Election of Board Members.....	39
Absentee Ballot #2 - Budget Approval.....	40

Motions to be presented:

- To approve the minutes of the ESCE AGM held May 29, 2023
- To amend bylaw 4. *Membership* (Special Resolution)
- To approve the proposed budget for the 2024-2025 fiscal year
- To conduct the election of members to the Board
- To conclude the business portion of our meeting
- To destroy the ballots of the election
- To adjourn the meeting

2024 ESCE Annual General Meeting Agenda

1. **Call-To-Order** **Lindsay McDavid, Board Co-Chair/Secretary**
2. **Opening Devotions and Prayer** **Keith Piquette, Acting Executive Director**
3. **ESCE Business** **Russ McDermott, Moderator**
 - a. **2023 ESCE Annual General Meeting Minutes**
 - i. Motion to Accept the ESCE 2023 AGM Minutes
 - ii. Discussion/Questions
 - iii. Vote by all members
 - b. **Election of New Board Members**
 - i. Board Structure and Nominee Introduction
 - ii. Overview of Board Structure
 - iii. Nominee Introduction
 - iv. Call for Nominations from the Floor
 - c. **Special Resolution - Bylaw Amendments**
 - i. Presentation of Proposed Amendments
 - ii. Motion Approve the Amendments to Bylaws
 - iii. Discussion/Questions
 - iv. Vote by all members
 - d. **Budget Report** **Heidi Dasilva, Treasurer**
 - i. Presentation of the 2024-25 budget
 - ii. Motion to Approve the Budget
 - iii. Discussion/questions
 - iv. Vote by all members
 - e. **Continuation of the Election of New Board Members**
 - i. Reading of New Profiles (if applicable)
 - ii. Motion to proceed with the vote to elect new board members
 - iii. Discussion/Questions
 - iv. Vote by all members
4. **Acknowledgement of Retirees and Long-Term Employees**
5. **Results of Motion to Elect Nominees**
6. **Results of Motion to Amend Bylaws**
7. **Results of Motion to Approve the Budget**
8. **Conclusion of the Business Portion of the Meeting**
 - a. Motion to conclude the business portion
 - b. Discussion/questions
 - c. Vote by all members

9. Destroy Ballots

- a. Motion to destroy the ballots
- b. Discussion/questions
- c. Vote by all members

10. Adjournment of the Meeting

- a. Motion to adjourn the meeting
- b. Discussion/questions
- c. Vote by all members

11. Closing Prayer

Ryan Huisman, ESCE Board Member

May 29, 2023, AGM Minutes

Edmonton Christian High School Library at 7:30pm

1. Welcome and Opening (Jason Veenstra)
 - a. It was noted that we have Quorum and can proceed
2. ESCE Business
 - a. Approval of June 2, 2022 minutes
 - i. Motion to approve the minutes from last year's AGM
 1. Moved by Glenn VandenBorn and seconded by Jennifer Snaterse
 2. Questions - call for any questions from the attendees related to the 2021 AGM minutes
 3. The Motion was carried
 - b. Executive Directors Report (Maureen Vaags-Nyhof)
 - i. Maureen reviewed the highlights from the executive director report linked [HERE](#) as part of the AGM package.
 - ii. Questions - call for questions about the Executive Directors Report or the Principals Report
 - c. Presentation for approval of the 2023-2024 Budget (Heidi Dasilva)
 - i. Heidi reviewed the budget as presented in the AGM package
 - ii. Motion to approve the ESCE proposed budget for the 2023-2024 fiscal year as presented
 1. Moved by Ryan Huisman and seconded by Marcia Kwolick
 2. Questions - call for any questions from the attendees related to the presented budget
 - a. A request was made to include the balance sheet in the AGM package for the next AGM. This will be done next year.
 3. The motion was carried.
 - d. Tribute to Sid deHaan (Darren Oskoboiny)
 - e. Election of new board members (Brent Taylor)
 - i. 3 Board Nominees:
 1. Lindsay McDavid
 2. Mark Smeltzer
 3. Neil Roberts
 - ii. Motion to affirm the slate of nominees presented to become members of the Board of the Edmonton Society for Christian Education

1. Moved by Michael Taekema and seconded by Neil Roberts
 2. Questions - call for any questions from the attendees related to the nominees
 3. Motion carried for the slate of nominees
 4. The ballots were destroyed
3. Acknowledgement of Long-term employees, Retirees and Retiring board members
 - a. Long-term service employees
 - i. 5 years: Jacqueline Boschman, Aly Knol, Bruce Smid, Beth Skepple, Margaret VandeKraats, Rachel Wolthuis, Alicia Worobetz
 - ii. 10 years: Jayna Bakker, Amanda Kleine, Richard Lobb, Leona Nieuwenhout, Jon Yu
 - iii. 15 years: MaryAnn Johansson, Amalia Lopez
 - iv. 20 years: Lisa Smid
 - v. 30 years: Helen Krol
 - b. Retirees
 - i. Darren Oskoboiny (8years)
 - ii. Jon Yu (10 years)
 - c. Retiring board members
 - i. Jason Veenstra, Brent Taylor and Harriet Eskiw
4. Motion to adjourn the meeting - moved by Raegan Skaug and seconded by Cindy Voogd
5. Closing (Maureen Vaags-Nyhof)

Board Nominees

Members of our Society nominated the following candidates, who the Board is now recommending to serve as directors for the ESCE. These nominees have been carefully selected to best meet our current and future needs. These individuals have been chosen for their ability to effectively represent and address the strategic priorities and goals of ESCE.

Logan Day (three-year term)

Since becoming a member of the Edmonton Society for Christian Education in 2006, I have been a dedicated and active participant in the Edmonton Christian School community. My wife and I have seen two of our children graduate from Edmonton Christian Schools, where they completed their entire school careers. Our sons Isaac and Everest are in grades 12 and 10 at Edmonton Christian High School.

I am in my second year of volunteering as an assistant coach for the Senior Boys Basketball team at Edmonton Christian High School, working under the guidance of Rob Hofstede. My commitment to the school extends beyond coaching; I have also volunteered for various student activities, including three years as a parent volunteer for the Junior High Winter Camp.

Professionally, I bring a wealth of expertise in investment banking, particularly in mergers and acquisitions. Throughout my career, I have excelled in helping business owners navigate the complexities of buying and selling businesses. This role demands a high degree of proficiency in negotiation and the ability to find common ground among multiple parties with diverse viewpoints. As the Office Managing Partner of Ernst & Young in Edmonton, I lead a team of 150 financial professionals, demonstrating my organizational, communication, and delegation capabilities.

In my business endeavors, I am passionate about professional development and building the business of Ernst & Young. I leverage relationships to secure new mandates, support the career growth of my colleagues, and maintain ongoing client management.

My leadership skills are further evidenced by my involvement in various boards, including The Support Network, Kids Up Front, and Paul Brandt's Buckspring Foundation. My multiple terms on these boards have provided me with a deep understanding of governance and strategic planning.

I enjoy various activities, from spending time with my family and playing sports to running six days a week and watching the Oilers. I also love skidooing in the winter, boating in the summer, and attending church. My family and I are active members of Beulah Alliance Church, where we participate weekly and engage in youth group activities and volunteer work.

My dedication to my faith and community, combined with my professional experience and volunteer commitments, make me a valuable asset to the Edmonton Christian School Board. My desire to serve stems from a deep appreciation for the school community that has significantly nurtured and enhanced the lives of my four children. I am eager to give back and contribute to the continued success and growth of Edmonton Christian Schools.

Melanie Dreger (three-year term)

My husband and I have three children in ECWS, and I am deeply committed to serving on the board. Witnessing my children's faith develop and mature year after year at ECS has been incredibly fulfilling. I am dedicated to ensuring that this nurturing faith community continues to thrive for them and for future generations.

I have actively engaged with ECS through various roles, participating in decision-making on the school council, contributing to the spiritual well-being of our community through parent prayer meetings, and supporting the kindergarten and grade 2 classes as a volunteer. These experiences have given me a deep appreciation for the unique and supportive environment at ECS.

Outside of ECS, I bring extensive board experience. I have served on the boards of three different condo associations and a housing COOP. Additionally, I have been actively involved in church leadership, serving on both the Deacons board and Missions board in roles including secretary, president, and general board member. These roles have honed my leadership skills and provided me with a broad perspective on governance and community engagement.

Professionally, I have 12 years of experience working for a non-profit organization. During this time, I have led fundraising efforts, developed long-term strategic plans, and played a significant role in leadership development and staff training both in Canada and with international partners. I have overseen a local staff team, managed a National Project, and coordinated a regional team. My participation in multinational leadership development projects has further enhanced my ability to work collaboratively and effectively in diverse environments.

One of the real strengths of our community at ECS is its cultural diversity. As a First Nations family, my children and I bring unique perspectives that enrich our community. I believe in modeling to our children that every child has God-given value. Despite societal narratives, it is their choices, not their history, that define who they are.

My passion lies in exploring faith and the person of Christ through scripture, nature, prayer, and service. My husband and I are active members of Sturgeon Valley Baptist Church, where we find community and spiritual growth. I am eager to contribute my skills and experience to ensure ECS remains a place where faith and education go hand in hand, fostering a supportive and inclusive environment for all students.

Fola Olusoga (three-year term)

I have been a member of the Edmonton Society for Christian Education since 2020 and am passionate about contributing to our vibrant community. I currently have two children attending Northeast School, and my involvement with Edmonton Christian School includes volunteering on school field trips and participating in in-class kindergarten parent volunteering.

My areas of expertise lie in corporate governance, risk management, compliance, project management, and finance. I have cultivated a strong foundation in these fields, which I believe will be invaluable to the board. My professional background is complemented by my keen interest in policy, finance, and nominations, areas where I can bring insightful contributions and support.

In terms of leadership, I possess critical thinking, effective communication, and conflict-resolution skills. My leadership experience includes serving as Vice Chair of Ego Group, a real estate corporation, and as Finance Director for CYF, a Christian youth ministry dedicated to the well-being of young people in Nigeria. Additionally, I serve as Programs & Logistics Director at RCCG Place of Rest Parish, demonstrating my commitment to my faith community.

I am eager to serve on the board to support the Society in executing its vision, mission, and strategic plan. I am committed to providing recommendations that can strengthen the board's corporate governance practices. As a first-generation immigrant, I am also passionate about broadening the representation of individuals at the board level, ensuring that it reflects the diverse membership of our society.

With my MBA and background in Management Consulting, I believe I can offer valuable insights during board deliberations. I am committed to attending meetings, preparing in advance, and contributing to the effective use of time during board meetings. By emphasizing my expertise, leadership experience, and commitment to the community, I hope to present myself as a highly qualified and dedicated candidate for the board. My goal is to contribute to the continued success and growth of the Edmonton Christian School community, supporting an environment where our children can thrive both academically and spiritually.

Chelsea Voogd (one-year term)

My husband and I are alumni of Edmonton Christian School, and our children are attending the Northeast school in grades 8, 6, and 4.

Since my children started attending ECS in 2014, I have been actively involved in the school community. Over the past nine years, I have volunteered at numerous events, field trips, and fundraisers. Additionally, my family has consistently supported the annual auction both personally and through our business.

I possess strong communication and leadership skills, which are complemented by my excellent budgeting and organizational abilities. My experience in running a business has equipped me with the capability to interact effectively with a diverse range of people, and I thrive in collaborative environments. I am passionate about community, planning, and executing events.

My interests include hiking, skiing, and spending time with my family. I have a deep love for the outdoors, nature, and gardening. With a background in finance and a business finance diploma from NAIT, I bring financial acumen to the table. I have served on the Family Friendly Soccer committee for five years and enjoy coaching volleyball and soccer teams. Additionally, I am an expert gardener.

My husband and I own and operate a tree nursery and garden center in Edmonton, which has been in business for over 40 years. Managing a large staff has significantly enhanced my communication, leadership, and organizational skills. I have also served on numerous committees at the church level and have organized various fundraisers and events for all age groups within the church.

Involvement in the Christian community has been a significant part of my life. I have served on nursery and Sunday school committees at West End Christian Reformed Church, and have been

involved in vacation bible school, women's bible study, and the GEMS girls group for many years. After transferring to Bethel Christian Reformed Church in 2018, I continued to serve as a Sunday school teacher and organized numerous events and fundraisers. I also served as secretary on the Missions committee for two years, planning mission trips, fundraisers, and other events. Currently, my family and I attend Northpointe Community Church.

I am eager to serve as a board member and make a meaningful impact on Edmonton Christian Schools. Our children are third-generation attendees, and I am passionate about ensuring Christ-centered school options for families. The community we have built has been a tremendous gift, and I am dedicated to maintaining a high level of excellence at the school for future generations. I believe I can be a valuable asset to the board due to my strong communication skills, leadership experience, and deep-rooted commitment to Edmonton Christian Schools' ongoing success.

Special Resolution - Bylaw Revision

Key Points

These proposed bylaw revisions will not come into effect at the upcoming Annual General Meeting and will not impact the voting process during that meeting. Even if these revisions are passed at the AGM, they are subject to review and approval by Service Alberta before implementation.

The special resolution involves changes to the Society's bylaws, specifically regarding membership eligibility and membership fees. The key points of the proposed amendment are:

- **Introduction of Membership Criteria:** Members must fulfill at least one of the specific criteria (parent/guardians and grandparents of current students, or current staff of the Society/Schools). Active membership now requires ongoing fulfillment of these criteria.
- **Removal of Specified Membership Fee Amount:** In accordance with best practices, the bylaws refrain from specifying membership fees. This approach allows the Board of Directors the flexibility to set appropriate fees and provides flexibility for future adjustments.
- **Special Consideration Mechanism:** Introduces a mechanism for granting membership to those who do not meet the aforementioned criteria but demonstrate remarkable dedication to the Edmonton Society for Christian Education (ESCE) or Edmonton Christian Schools (ECS).

Rationale for the Changes

Our goal is to uphold the integrity of our membership by ensuring it comprises individuals who wholeheartedly endorse the Society's mission and actively participate in our community. Recently, we've observed an increase in individuals with no direct affiliation with the Society joining for reasons unrelated to our core values, mission, and vision. This deviation from the original intent of the bylaws, where only those directly impacted by our operations should have a say, necessitates a revision.

We believe that those directly affected by decisions made at ESCE and ECS should have voting rights, as they are the ones most impacted by the outcomes. This doesn't alter the ability of others to support us through their time and donations; rather, it emphasizes the importance of representation for those directly affected.

The proposed bylaw changes aim to realign our focus on individuals genuinely engaged with our schools, in harmony with the Society's foundational mission and vision. This shift promotes a more unified, community-driven membership, enabling us to make decisions that genuinely benefit our current school community and its families.

Voting Procedure

A special resolution requires a 75% majority vote of those present at the membership meeting.

Outline of Proposed Changes

Reference: [4. Membership](#)

<p>4.1 Any person who has attained the age of eighteen years, who is in agreement with the basis of the Society as herein before set out, who desires to aid in the achievement of the objectives of the Society, meets at least one of the membership criteria outlined in clause 4.1.1, and signs the Statement of Faith, which summarizes the basis of the Society as found in clause 2 above shall be considered an inactive (nonvoting) member.</p>	<p>ADD: meets at least one of the membership criteria outlined in clause 4.1.1</p>
<p>4.1.1 To qualify, members must meet at least one of the following criteria:</p> <p>4.1.1.1 Be a parent, guardian, or grandparent of a current student.</p> <p>4.1.1.2 Be staff of The Edmonton Society for Christian Education or teachers and staff of Edmonton Christian Schools. This eligibility does not extend to spouses of staff.</p>	<p>ADD: 4.1.1 (this is a new clause)</p>
<p>4.2 Any inactive member may become an active (voting) member by making a tax-receiptable donation to the Society in the amount</p>	<p>ADD: in the amount determined by the Board of</p>

<p>determined by the Board of Directors as specified in the ESCE membership policy. Members must also continue to meet the criteria outlined in clause 4.1.1 to attain active status. of not less than \$25.00 per single or \$50.00 per couple. The donation required for membership is waived in the case of persons who have children attending a School operated by the Society and who are paying program fees.</p>	<p>Directors as specified in the ESCE membership policy.</p> <p>ADD: Members must also continue to meet the criteria outlined in clause 4.1.1 to attain active status.</p> <p>REMOVE: of not less than \$25.00 per single or \$50.00 per couple.</p>
<p>4.3 Continuous active membership is dependent upon continued support of the Statement of Faith, continued compliance with the criteria outlined in clause 4.1.1, and regular financial support of the Society in the amount determined by the Board of Directors as specified in the ESCE membership policy. of \$25.00 or more per single or \$50.00 or more per couple per year.</p>	<p>ADD: and continued compliance with the criteria outlined in clause 4.1.1</p> <p>ADD: determined by the Board of Directors as specified in the ESCE membership policy.</p> <p>REMOVE: of \$25.00 or more per single or \$50.00 or more per couple per year</p>
<p>4.4 Only active members are entitled to vote at membership meetings.</p> <p>4.5 Any member may withdraw from membership in the Society by notifying the Board.</p> <p>4.6 Any member may be expelled by vote of the Board for reason of any act found to be in conflict with the basis of the Society.</p> <p>4.7 Members will have access to an appeal mechanism comprised of four (4) active (voting) Society members.</p>	<p><i>No changes to these clauses.</i></p>
<p>4.8 To be considered an active member on any given date, a person must have made the annual financial contribution, as set by the Board of Directors, during a period of time that includes that given date until 4:00 p.m., reckoning back to the previous year's September 1.</p>	<p>ADD 4.8 (this is a new clause)</p>

4.9 The board may vote to grant membership to those who do not meet the criteria outlined in clause 4.1.1 but exhibit exceptional dedication to the Society and Edmonton Christian Schools through significant volunteer efforts or financial contributions. Additionally, professional expertise or skills that contribute to the advancement of Edmonton Christian Schools may also be taken into account.	ADD 4.9 (<i>this is a new clause</i>)
4.10 Rejected applicants will have access to an appeal mechanism comprised of four (4) active (voting) Society members.	ADD 4.10 (<i>this is a new clause</i>)

Proposed New Bylaw

(inclusive of the above changes)

4.1 Any person who has attained the age of eighteen years, who is in agreement with the basis of the Society as herein before set out, who desires to aid in the achievement of the objectives of the Society, meets at least one of the membership criteria outlined in clause 4.1.1, and signs the Statement of Faith, which summarizes the basis of the Society as found in clause 2 above shall be considered an inactive (nonvoting) member.

4.1.1 To qualify, members must meet at least one of the following criteria:

4.1.1.1 Be a parent, guardian, or grandparent of a current student.

4.1.1.2 Be staff of The Edmonton Society for Christian Education or teachers and staff of Edmonton Christian Schools. This eligibility does not extend to spouses of staff.

4.2 Any inactive member may become an active (voting) member by making a tax-receiptable donation to the Society in the amount determined by the Board of Directors as specified in the ESCE membership policy. Members must also continue to meet the criteria outlined in clause 4.1.1 to attain active status. The donation required for membership is waived in the case of persons who have children attending a School operated by the Society and who are paying program fees.

4.3 Continuous active membership is dependent upon continued support of the Statement of Faith, continued compliance with the criteria outlined in clause 4.1.1, and regular financial support of the Society in the amount determined by the Board of Directors as specified in the ESCE membership policy.

4.4 Only active members are entitled to vote at membership meetings.

4.5 Any member may withdraw from membership in the Society by notifying the Board.

4.6 Any member may be expelled by vote of the Board for reason of any act found to be in conflict with the basis of the Society.

4.7 Members will have access to an appeal mechanism comprised of four (4) active (voting) Society members.

4.8 To be considered an active member on any given date, a person must have made the annual financial contribution, as set by the Board of Directors, during a period of time that includes that given date until 4:00 p.m., reckoning back to the previous year's September 1.

4.9 The board may vote to grant membership to those who do not meet the criteria outlined in clause 4.1.1 but exhibit exceptional dedication to the Society and Edmonton Christian Schools through significant volunteer efforts or financial contributions. Additionally, professional expertise or skills that contribute to the advancement of Edmonton Christian Schools may also be taken into account.

4.10 Rejected applicants will have access to an appeal mechanism comprised of four (4) active (voting) Society members.

Treasurer Report

Executive Summary

1. Budgeting for a deficit for the current year due to repairs for the high school roof
2. Increase in fees of 1.5% and an increase of \$100 for the capital levy
 - a. An increase of \$100 capital levy is per family
 - b. The increase in the capital levy will be used to repay debt
3. Anticipating taking a line of credit from the Christian Credit Union to a maximum of \$700k to finance the roof repair

Repairs, Maintenance, and Improvements

Budget 2024-2025 maintenance budget of \$227k includes:

- Hippo CMMS software to improve maintenance planning & execution
- Truck maintenance
- Grounds maintenance
- Various heating, plumbing & electrical projects
- The high school roof is shown as an extraordinary item and is disclosed underneath operations

Key Figures

- Receipts - \$3.4m
- Operating costs - \$3.7m
- Mortgage payments - \$476k on principal

Cash Receipts - \$3.4m

- Program fees of \$1.98m (58%)
- Expected lease revenue of \$806k consistent with the current year
- Auction and Fall Carnival Fundraising are to be restricted for North School capital campaign

The Edmonton Society for Christian Education
2024-2025 Budget
Statement of Cash Flows

	1.5% Increase + \$100 Capital Levy	2023-24 Forecast	2023-2024 Budget	2022-2023 Actuals
OPERATING ACTIVITIES				
Excess (deficiency) of revenues over expenses	(674,560)	(64,860)	(25,745)	(288,597)
Items not affecting cash:				
Amortization of property and equipment	964,631	1,043,477	909,665	1,039,796
Amortization of deferred capital contributions	(260,934)	(260,934)	(260,374)	(263,230)
Capital contributions deferred		0	0	
(Gain) loss on sale of equipment	0	0	0	1,125
Write-off of property and equipment		0	0	
Changes in non-cash working capital balances		0	0	73,581
Cash flow from operating activities	29,137	717,682	623,546	562,675
INVESTING ACTIVITIES				
Purchase of property and equipment	(37,500)	(10,000)	(111,500)	(23,348)
Proceeds from the sale of equipment		0	0	
West School building project		0	0	
Cash flow used by investing activities	(37,500)	(10,000)	(111,500)	(23,348)
FINANCING ACTIVITIES				
Proceeds from mortgages and bank loan		0	0	
Repayment of mortgages	(476,682)	(460,190)	(460,190)	(446,043)
Repayment of line of credit	(56,448)			
Proceeds from line of credit	700,000			
Member loan repayment		(200,000)		702
Capital contributions from donors	230,000	20,000	20,000	20,610
Cash flow from financing activities	396,870	(640,190)	(440,190)	(424,731)
INCREASE (DECREASE) IN CASH	388,507	67,492	71,856	114,596
Cash (Deficiency) - beginning of period	666,408	598,916	598,916	484,320
CASH (DEFICIENCY) - end of period	1,054,915	666,408	670,772	598,916

The Edmonton Society for Christian Education
2024-2025 Budget
Statement of Financial Position

	1.50% Jun-30 2025	Forecast Jun-30 2024	Audited Jun-30 2023
Cash	1,054,915	666,408	598,916
Accounts receivable	222,465	222,465	222,465
GST recoverable	15,839	15,839	15,839
Prepaid expenses	50,219	50,219	50,219
Current assets	1,343,438	954,931	887,439
Property & equipment	23,935,040	24,862,171	25,895,648
ASSETS	25,278,477	25,817,102	26,783,087
Accounts payable	206,008	205,693	205,693
Unearned fees	64,901	64,901	64,901
Deferred capital assessment	108,863	108,863	108,863
Line of credit	643,552		-
Member loans payable			200,000
Mortgage payable		-	-
Current	1,023,324	379,457	579,457
Member loans payable	96,011	96,011	96,011
Mortgages payable	11,378,871	11,815,869	12,276,059
Tenant loan payable	650,000	650,000	650,000
Deferred capital campaign contributio	230,000	20,000	
Deferred capital contributions	7,168,151	7,449,085	7,710,019
Liabilities	20,546,357	20,410,421	21,311,546
Invested in prop. & equip.	5,157,702	5,577,217	5,909,569
Internally restricted	136,604	81,604	39,604
Accumulated operating deficiency	(562,185)	(252,140)	(477,632)
Net assets	4,732,120	5,406,681	5,471,541
LIABILITIES & NET ASSETS	25,278,478	25,817,102	26,783,087

	2024-2025 Budget 1.5% Increase + \$100 Capital Levy	2023-2024 Current Forecast	2023-2024 Budget	2023 Actual (Audited)
1. REVENUE				
1.1 Christian Program Fees	\$1,988,933.10	\$1,978,195.00	\$1,985,870.00	\$1,927,036.00
1.1b Subsidy Expense	-\$120,000.00	-\$140,000.00	-\$110,000.00	-\$110,000.00
1.2 Preschool Fees	\$87,685.00	\$87,685.00	\$77,595.00	\$87,627.00
1.3 Transportation Fees	\$112,404.88	\$81,000.00	\$137,040.00	\$103,139.00
1.4 Facilities Lease	\$805,716.00	\$806,400.00	\$806,400.00	\$805,716.00
1.5 Memberships & Donations	\$200,000.00	\$200,000.00	\$200,000.00	\$188,039.00
1.6 Church Collections	\$15,000.00	\$7,500.00	\$15,000.00	
1.7.1 Special Fundraising - Auction	\$40,000.00	\$40,000.00	\$40,000.00	
1.7.2 Special Fundraising - Other	\$15,000.00	\$18,000.00	\$15,000.00	
1.8 Miscellaneous Income	\$4,000.00	\$9,500.00	\$9,500.00	\$4,687.00
1.9 Senior High Cafeteria Revenue	\$25,000.00	\$25,000.00	\$25,000.00	\$42,696.00
1.10 Contributions Deferred to Future Periods	\$0.00	\$0.00	\$0.00	
1.11 Amortization of def. cap.contributions	\$260,934.48	\$260,934.48	\$260,374.00	\$263,230.00
1.12 Capital Campaign revenue	\$230,000.00	\$20,000.00	\$20,000.00	
1.13 Capital campaign revenue deferred	-\$230,000.00	-\$20,000.00	-\$20,000.00	
	\$3,434,673.46	\$3,374,214.48	\$3,461,779.00	\$3,312,170.00

2. SCHOOL SUPPORT

2.1 School Staff Christian Prof. Dev. and Curriculum Dev	\$327,017.27	\$333,890.58	\$333,891.00	\$248,623.00
2.2 Memberships in Christian support organizations	\$73,885.00	\$73,885.00	\$73,885.00	\$72,985.00
2.3 Preschool Expenses	\$78,852.66	\$78,824.94	\$78,825.00	\$96,240.00
2.4 Senior High Cafeteria Expenses	\$25,000.00	\$25,000.00	\$25,000.00	\$35,288.00
2.5 Other Christian Program Expenses (i.e. Grad gifts)	\$13,000.00	\$10,000.00	\$10,000.00	\$16,208.00
2.6 Christian Program Learning Resources	\$2,000.00	\$1,000.00	\$2,000.00	\$4,746.00
2.7 Furniture, Equipment, Computers under \$5000	\$125,000.00	\$65,000.00	\$65,000.00	\$110,548.00
2.8 Amortization of Furn., Equip., Comp.	\$68,102.12	\$133,812.51	\$133,813.00	\$133,996.00
2.9 Society expenses				
	\$712,857.05	\$721,413.04	\$722,414.00	\$718,634.00

3. TRANSPORTATION

3.1 Route costs	\$125,000.00	\$125,000.00	\$125,000.00	\$117,811.00
3.2 Field trip costs	\$30,000.00	\$40,000.00	\$40,000.00	\$23,291.00
	\$155,000.00	\$165,000.00	\$165,000.00	\$141,102.00

4. DEVELOPMENT, ADMISSIONS, MARKETING

4.1 Salaries & Benefits	\$179,789.06	\$178,441.86	\$178,442.00	\$182,337.00
4.2 Advertising & Promotion	\$28,800.00	\$30,000.00	\$30,000.00	\$24,433.00
4.3 Society Expenses related to development		\$20,000.00	\$20,000.00	\$19,687.00
4.4 Membership dues development	\$0.00	\$0.00	\$0.00	
	\$208,589.06	\$228,441.86	\$228,442.00	\$226,457.00

5. FACILITIES

5.1 Maintenance	227,000.00	\$172,000.00	\$178,000.00	\$437,015.00
5.1.1 Salaries and Benefits	\$117,053.44	\$115,236.88	\$139,668.00	\$143,635.00
5.2 Utilities	\$375,000.00	\$375,000.00	\$375,000.00	\$366,180.00
5.3 Insurance	\$88,268.25	\$84,065.00	\$84,065.00	\$69,010.00
5.4 Mortgage Interest	\$418,299.42	\$390,753.59	\$390,754.00	\$393,489.00
5.5 Amortization of Buildings & Portables	\$889,414.86	\$899,932.75	\$899,933.00	\$896,068.00
5.6 Amortization of Vehicle	\$7,114.42	\$9,731.76	\$9,732.00	\$9,732.00
5.7 Temporary Portables	\$0.00	\$0.00	\$0.00	
	\$2,122,150.39	\$2,046,719.98	\$2,077,152.00	\$2,315,129.00

6. ADMINISTRATION

6.1 Salaries & Benefits	\$306,643.40	\$283,000.00	\$303,916.00	\$250,949.00
6.2 Office Expenses includes equipment leasing	\$15,000.00	\$15,000.00	\$15,000.00	\$14,187.00
6.3 Insurance	\$2,577.75	\$2,455.00	\$2,455.00	\$10,501.00
6.4 Society expenses	\$20,000.00			
6.5 Professional Fees	\$45,000.00	\$45,000.00	\$45,000.00	\$31,319.00
6.6 Bank Charges, Discounts, Interest	\$5,000.00	\$15,000.00	\$15,000.00	\$11,812.00
6.7 Computer Systems Support	\$23,000.00	\$65,000.00	\$65,000.00	\$16,638.00
6.8 (Gain) Loss on sale of Equipment	\$0.00	\$0.00	\$0.00	\$1,125.00
6.9 Bad Debt	\$60,000.00	\$60,000.00	\$60,000.00	\$48,691.00
6.10 Donation Expense				
Memberships & Dues (AISCA)		\$11,745.00	\$11,745.00	\$12,361.00
Loss on disposal of marketable securities				\$2,736.00
	\$477,221.15	\$497,200.00	\$518,116.00	\$400,319.00

TOTAL EXPENSES	\$3,675,817.64	\$3,658,774.88	\$3,711,124.00	\$3,801,641.00
EXCESS (DEFICIENCY) OF REVENUE OVER EXPENSES - OPERATIONS	-\$241,144.19	-\$284,560.40	-\$249,345.00	-\$489,471.00
Write-off of property & equipment				
Capital Levy	\$304,200.00	\$219,700.00	\$223,600.00	\$220,505.00
Demolition costs				-\$19,631.00
High School Roof	(737,616.00)			
Total surplus (deficit)	-\$674,560.19	-\$64,860.40	-\$25,745.00	-\$288,597.00
revenue (less amortization)	\$3,173,738.98	\$3,113,280.00	\$3,201,405.00	\$3,048,940.00
expenses (less amortization)	\$3,516,904.36	\$2,749,110.37	\$2,801,459.00	\$2,895,841.00
balance (cash)	-\$343,165.39	\$364,169.63	\$399,946.00	\$153,099.00

	2023 Actual			
	Invested In PPE	Internally Restricted	Accumulated Operating Deficiency	Total
NET ASSETS - BEGINNING OF YEAR	\$6,238,479.00		-\$478,341.00	\$5,760,138.00
Deficiency of revenues over expenses			-\$288,597.00	-\$288,597.00
Acquisition of property and equipment	\$23,348.00		-\$23,348.00	\$0.00
Loss on disposal	-\$1,125.00		\$1,125.00	\$0.00
Amortization of property and equipment	-\$1,039,796.00		\$1,039,796.00	\$0.00
Deferred contributions recognized	-\$7,569.00		\$7,569.00	\$0.00
Deferred contributions received	-\$13,041.00		\$13,041.00	\$0.00
Amortization of deferred capital cont	\$263,230.00		-\$263,230.00	\$0.00
Principal repayments	\$446,043.00		-\$446,043.00	\$0.00
Auction		\$39,604.00	-\$39,604.00	\$0.00
NET ASSETS - END OF YEAR	\$5,909,569.00	\$39,604.00	-\$477,632.00	\$5,471,541.00

	2024 Forecast			
	Invested In PPE	Internally Restricted	Accumulated Operating Deficiency	Total
NET ASSETS - BEGINNING OF YEAR	\$5,909,569.00	\$39,604.00	-\$477,632.00	\$5,471,541.00
Deficiency of revenues over expenses			-\$64,860.40	-\$64,860.40
Acquisition of property and equipment	\$10,000.00		-\$10,000.00	\$0.00
Loss on disposal	\$0.00		\$0.00	\$0.00
Amortization of property and equipment	-\$1,043,477.02		\$1,043,477.02	\$0.00
Deferred contributions recognized	\$0.00		\$0.00	\$0.00
Deferred contributions received	-\$20,000.00		\$20,000.00	\$0.00
Amortization of deferred capital cont	\$260,934.48		-\$260,934.48	\$0.00
Principal repayments	\$460,190.41		-\$460,190.41	\$0.00
Auction		\$42,000.00	-\$42,000.00	\$0.00
NET ASSETS - END OF YEAR	\$5,577,216.87	\$81,604.00	-\$252,140.27	\$5,406,680.60

2024 Forecast			
Invested In PPE	Internally Restricted	Accumulated Operating Deficiency 1.5% Increase + \$100 Capital Levy	Total
\$5,577,216.87	\$81,604.00	-\$252,140.27	\$5,154,540.34
		-\$674,560.19	-\$1,358,918.08
\$37,500.00		-\$37,500.00	-\$37,500.00
0		\$0.00	\$0.00
-\$964,631.40		\$964,631.40	\$964,631.40
\$0.00		\$0.00	\$0.00
-\$230,000.00		\$230,000.00	\$230,000.00
\$260,934.48		-\$260,934.48	-\$260,934.48
\$476,681.90		-\$476,681.90	-\$476,681.90
	\$55,000.00	-\$55,000.00	-\$55,000.00
\$5,157,701.85	\$136,604.00	-\$562,185.44	\$4,160,137.28

2024-2025 Service Recognition

We extend our heartfelt gratitude to every individual whose unwavering dedication has enriched the fabric of Edmonton Christian Schools. We are profoundly grateful for the multitude of gifts and talents given to each employee by God, gifts that have been generously shared to nurture and advance our community. Your tireless efforts, passion, and commitment have left an indelible mark on ECS, shaping its very essence and guiding its journey. As we come together to recognize and honour your contributions, we do so with deep appreciation and reverence for your profound impact on the lives of those within our ECS family.

5 Years

Inge Tinga
Heather Moss

10 Years

Breanne Benoit
Nick Boschman
Ruby Dulyok
Ellen Haimila
Richard Lobb
Liz Rachul
Holly Sperling
Angela VanKooten (12yrs)
Marie Vriend
Holly Sperling

15 Years

Carrie Chasse
Dominique Dickau
Rebekah Esser
Conrad Hoover
Geraldine Kingma
Michelle L'Heureux
Colleen VanVeen
Dorothy Visser

20 Years

Lena Ayers
Lucia Blair
Louise Reich
Clint Schenk
Sharon Yskes

30 Years

Linda Hale
Edith Houtstra
Joan Konynebelt

35 Years

Lori Walters
Laurie Zylstra

Retirees

Laurie Zylstra
Geraldine Kingma
Suzanne Knol

Board Chair Report

Edmonton Society for Christian Education (ESCE) Members, Staff, Members of the Board and Edmonton Christian School (ECS) Staff and Parents,

Our Mission and Vision are Responding to God's Grace. ECS challenges students, through Christ-centered education, to actively play their role in God's story and Accept Christ's Invitation to Live for Renewal. In the business and current issues that we are facing, let us not lose focus of our mission and vision.

This is my first report to Edmonton Society for Christian Education members. When I accepted the invitation to allow my name to stand to become a board member, I did not know what the year would bring. The commitment and dedication to serving from my fellow board members have been amazing. The board members themselves have probably donated about 100 hours of their free time to society-related issues, far more than they believed they would at the beginning of the school year. I appreciate all that you do and all the time you have given. It has not been an easy year for any of us. Continue to pray for the board and that God will guide us, and the new ESCE Board members, in this coming year.

For the last several years, the board has been reacting to changing circumstances, such as COVID-19 and staffing changes. The hope at the start of the year was that the board could get back into a position of governance and strategic planning (into the Crow's nest), looking toward the future of our schools. This changed very quickly, and we moved back into a position of reacting to current circumstances. We spent a significant amount of time and focus, initially on the private letter to the board submitted by concerned parents. During the time of discussion and making efforts to move forward, the board continued to receive communications that required attention and response. And it has been like this all year. We've made significant attempts to provide clear communications to society members.

Based on what I have heard, there were two large concerns: (1) The board is making changes without consultation and approval from the membership, and (2) the partnership agreement with EPSB is being jeopardized. It is important for all members to understand that any significant changes that will affect our schools will be discussed with the community prior to a formal amendment or vote. Impactful decisions will be made by the community and not just the board. We have spoken with the assistant superintendent and reiterated our commitment to the partnership agreement, and both parties have communicated that we value and respect the partnership

agreement. We also communicated the importance of a strong and healthy relationship. The board will continue to work with EPS to find mutually beneficial solutions to issues that may arise.

There have been challenges and conflicts within our ECS community over the past year. While conflict, to some degree, will happen within any community, it has hurt some staff, board members and parents over this school year. We seek to follow Jesus and actively seek opportunities for positive change and restoration, both within our community and in the world we live in. To help facilitate this, listening groups have been scheduled to listen to the concerns of parents from all perspectives and viewpoints. The details of these listening groups will be communicated closer to the dates. A process of restoration will be developed, and you are invited to participate, starting with these listening groups.

We desire to be a strong community focused on serving God by fulfilling our mission and vision.

Sincerely,

Lindsay McDavid Co-Chair on behalf of
Mark Smeltzer Co-Chair and the ESCE Board of Directors

Executive Director Report

⁷ **"But blessed is the one who trusts in the LORD,
whose confidence is in him.**

⁸ ***They will be like a tree planted by the water
that sends out its roots by the stream.***

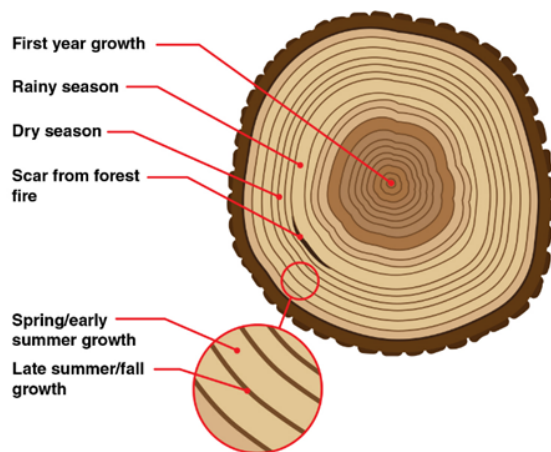
***It does not fear when heat comes;
its leaves are always green.***

***It has no worries in a year of drought
and never fails to bear fruit."***

-Jeremiah 17:7-8 (NIV)

Dear ECS community,

As we gather for our Annual General Meeting, I am filled with gratitude for the opportunity to serve as your Acting Executive Director over the past three months. Reflecting on the past few years, particularly the last season, I am reminded of a tree's life cycle.



As you may recall from school, each ring represents one season of a growth cycle. The wider the ring: the greater the season of growth. The narrower the ring: the greater the season of struggle. The growth is directly affected by the weather of the season. And at times, there are even scars left by fires and other traumatic events.

If future generations look back upon the growth rings of ECS they will see that these past few years have been ones of struggle, dotted with scars. However, if we stay truly rooted in the Lord, then we will have no fear of such seasons because we know that, in the end, we will never cease to produce kingdom fruit.

In recent times, our community has faced challenges that have tested us. Yet, in these moments, our faith calls us to come together, support one another, and remember that we are all part of a larger narrative — God's story. Our school theme, "Play your role in God's story," inspired by Matthew 22:37-40, reminds us of the greatest commandments: to love God with all our heart, soul, and mind, and to love our neighbour as ourselves. This message is the guiding principle for

overcoming the divisions we face. Loving our Lord means to exemplify him in all ways, including forgiveness motivated out of love and as an extension of His grace to us. If we can move forward in forgiveness and grace, then I feel these seasons of struggle will lead us to seasons of growth, but if roots of bitterness are allowed to grow, then it will poison the entire tree.

Student Body

Despite the challenges, our student body continues to thrive. Our students have excelled academically, spiritually, and in service to the community. Our teachers have shown exceptional dedication, teaching in a way that fosters both excellence and empathy. To our alumni and donors, your unwavering support has been instrumental in our success. Your contributions have not only sustained us but have propelled us forward.

Staff Updates

Interim Pastoral Care Leader: We have been blessed with the presence of an Interim Pastoral Care Leader at our NE school who has graciously stepped in during Cely's maternity leave. Kira Mulindwa's dedication ensures that our spiritual guidance remains steadfast and nurturing.

Assistant Principals: It is with great joy that we welcome Michelle Prinsonsky to our West School, and Sibin Ammanethu, Suzan Sidra, and Sherri Widynowski to our Northeast School. Their leadership and fresh perspectives are invaluable assets to our community.

West School/High School Principal: Hendrik Wolmarans, our new principal, has already made a significant impact with his exceptional leadership. His commitment to excellence is evident and deeply appreciated.

Program Highlights

Preschool: Our preschool continues to flourish, providing a loving and enriching environment for our youngest learners to grow in faith and knowledge.

Director of Learning: The new Director of Learning has been doing commendable work, enhancing our educational programs and ensuring that our students receive the best possible instruction.

Christian Education Program: Communication around our Christian Education Program has seen remarkable improvements, fostering a deeper understanding and engagement within our community.

Refugee Sponsorship Project: Our refugee sponsorship project is a testament to our collective compassion and action. We are on track to welcome new members into our Canadian family, embodying the spirit of hospitality and love.

Looking Forward

As we look to the future, let us embrace our roles in God's story with renewed commitment. Let us play our parts with courage and compassion, fostering an environment where every student can thrive. Our journey is not solitary; we walk together, guided by Christ's love and teachings.

In closing, I extend my heartfelt thanks to each of you for your continued faith in our mission. May we remain united in our purpose and steadfast in our faith as we educate and nurture the next generation of leaders in Christ's love.

Development

2nd Annual Carnival: A Celebration of Unity Our 2nd Annual Carnival was a resounding success, raising \$17,600. With 600 people in attendance and 90 volunteers contributing their time and talents, we celebrated more than just a fundraiser; we celebrated the spirit of community. This event was a beautiful tapestry of friendships and connections, woven together by shared laughter and joyous moments.

The Annual Auction: Our community's generosity shone brightly at our annual auction, where 534 items were donated, raising \$41,000 for The Creator's Classroom project.

The Creator's Classroom: This past year, we celebrated the launch of The Creator's Classroom capital campaign. To date, we have raised \$350,000, a testament to your unwavering support. With only \$650,000 remaining, we highly hope to break ground in spring 2025. This project will transform the Northeast School grounds into a vibrant space that ignites the imagination, nurtures faith, and invites our students to play their role in God's grand narrative.

Admissions

Info Sessions: Again, we hosted another six info sessions, three at our West school and three at our NE school. Prospective families had the opportunity to hear about the vision of our Christian education program, tour the school, meet the principal, and have all their questions answered personally.

First-year families: All of our first-year families received a personal call to welcome them to ECS, provide them with much-needed information, and collect their feedback.

Director of Learning

It's been a year of learning at Edmonton Christian Schools. It's been a year of learning for myself as I began to familiarize myself with a new role. My deep hope for the year was that Edmonton Christian Schools would be grace-filled image reflectors, learning and working together in God's Story. Looking back on recent events such as the grade 12 Passion Project Evening, Celebration of Learning events and the Wicihitowin Night, I am thankful for many examples of students, staff and community members connecting through Christ-centered learning.

Along with the Prairie Center for Christian Education (PCCE), I worked with 10 new ECS teachers in professional learning about integrating Christian education into their subject areas—Teaching for Transformation. This learning included opportunities to build connections with teachers in other Christian schools across the province, increasing resource and idea-sharing capacity.

Our school's leadership team has met regularly, working to maintain the school's mission and vision. With the help of PCCE, our team has maintained connections with other Christian schools across western Canada, sharing resources and ideas and engaging in professional learning opportunities.

Much of the focus this year has been connecting with teachers on the stories of learning already happening in their classrooms. Being curious about projects that were already happening taught me a lot about our classrooms: we have an incredibly dedicated team working to provide learning opportunities that respond to the ECS Mission and Vision. Staff new to our community reminded me of this in one of their reflections: *"I'm so glad to be a part of a school community that has such a heart for God and a vision for being a light in our world, as Jesus has called us."*

The Teaching for Transformation framework gives our learning community the opportunity to be reminded of their deep hopes amidst increasing curricular classroom demands. When “What is our deep hope?” is the first question asked when designing learning experiences, teachers reorient the learning to challenge students, through Christ-centered education, to actively play their role in God’s story.

Principals' Report

EDMONTON PUBLIC SCHOOLS	EDMONTON CHRISTIAN SCHOOLS
<p>VISION: Enhancing pathways for student success</p> <p>MISSION: Our commitment to high-quality public education serves the community and empowers each student to live a life of dignity, fulfillment, empathy and possibility</p> <p>CORNERSTONE VALUES: Accountability, Collaboration, Equity and Integrity</p>	<p>VISION: Accepting Christ's invitation to live for renewal</p> <p>MISSION: Responding to God's grace, Edmonton Christian School challenges students, through Christ-centered education, to actively play their role in God's story.</p>

Teaching for Transformation (TfT) Throughlines – A Pillar of ECS is its commitment to the development of biblical, restorative characteristics that can be used to live for renewal. They are sometimes referred to as Through-lines as they weave themselves into all of life. These characteristics include:

- Community Builder
- God Worshiper
- Justice Seeker
- Servant Worker
- Beauty Creator
- Creation Enjoyer
- Order Discoverer
- Earth Keeper
- Idolatry Discerner
- Image Reflector

School Theme: Play your role in God's story

Matthew 22:37-40 (34-40) The Greatest Commandment

34 Hearing that Jesus had silenced the Sadducees, the Pharisees got together. 35 One of them, an expert in the law, tested him with this question: 36 "Teacher, which is the greatest commandment in the Law?" 37 Jesus replied: "'Love the Lord your God with all your heart and with all your soul and with all your mind.' 38 This is the first and greatest commandment. 39 And the second is like it: 'Love your neighbour as yourself.' 40 All the Law and the Prophets hang on these two commandments."

Hebrews 13:1 (1-3)

1 Keep on loving one another as brothers and sisters. 2 Do not forget to show hospitality to strangers, for by so doing some people have shown hospitality to angels without knowing it. 3 Continue to remember those in prison as if you were together with them in prison, and those who are mistreated as if you yourselves were suffering.

Teaching for Transformation

We are committed to continuing the work that we have been doing in relation to the three core practices:

- **Storyline** - A powerful and compelling vision of the Kingdom that creates a longing and a desire within every student to play their part in God's unfolding story of creation - fall - redemption - restoration.
- **Throughlines** - Discipleship habits and practices that invite every student to imagine how to play their part in God's story. (Image reflector, Justice Seeker, Community Builder, God worshipper, Creation Enjoyer, Idolatry Discerner....)
- **Formational Learning Experiences (FLEx)** - FLEx provide authentic (real work, real problem, real people) opportunities for students to practice living the Kingdom story. This practice becomes a habit, shaping who we are.

Deep Hope

As administrators, our DEEP HOPE for our staff is that they have time, space, and support to reflect on and collaborate with colleagues. Our primary goal is to invite, nurture, and empower students to play their role in God's unfolding story of redemption. This Deep Hope has become even more meaningful as we consider the important work we are doing during uncertain times. What we do have as Christians is hope. We have the opportunity to be hopeful, to learn from our experiences, to bring the best part of the past forward and be more present in the future; to play our role in God's story in ways that we have not considered before; in ways that show love to each other and serve the world. This is our hope for our community.

We are excited to celebrate many successful school events this year through which we uphold the vision and mission of our schools:

Farewells and Graduations

As we plan our end-of-year celebrations and Graduation activities, we are currently planning important events. Our school communities are looking forward to celebrating the transitions and accomplishments of our students with Kindergarten grads, grade 9 farewells, and our high school commencement ceremony and graduation banquet.

Registration & Enrollment

Pre-enrolment ran from February 1 - March 22. As of Wednesday, May 15, the projected numbers for each school for the 2024 - 2025 school year are as follows:

- **West School:** 588 (this year 547) students, two classes at each grade level from K-9. There was a random selection process conducted for grade 7. West School is full and closed for new registration in grade 3, 5, 7 with only a few spaces available in the remaining grades.
- **Northeast School:** 716 students (this year 651), and we are currently full and closed for new registration at grades Kindergarten, 3, 4, 6, 7, 8, and 9. Northeast was able to accept all registrants up until the March 22 deadline. We are growing by one class this year and will need to give up our upstairs learning hub to accommodate the growth.
- **High School:** 286 students (this year 287), with 3 classes at each grade level.

Professional Development Update

Teaching staff at all 3 campuses are continuing their collective work on Teaching for Transformation (TfT) core practices:

Core Practice #1 - Storyline

Core Practice #2 - Biblical Throughlines

Core Practice #3 - Real Work, Real Problems, Real Audience through Formational Learning Experiences (FLEx)

On Friday, April 26, 2024, teachers from all three schools gathered together at ECHS to celebrate the work we have done around Teaching for Transformation this year. This work is an important part of how our teachers challenge our students to actively play their role in God's Story. Our time focused on Storyboards as a means to celebrate the story of learning in the classroom. We learned how their FLEx ideas materialized and what they have learned to grow the formational experiences for our students further next year. Teachers are all in different places along this journey of creating formational learning experiences, but we continue to grow in our practice. This celebration was about our Deep Hope to transform our students through meaningful engagement in curriculum and real experiences. This PD Day was also about growing from whatever point teachers are at and looking forward to building something that will be meaningful to their classroom context in the future. It is exciting to see our teachers' dedication to creating these meaningful lessons to grow the mission and vision of our school.

School Events Update and Highlights

High School - 'Love Your Neighbour' Chapel

This year, high school students and staff have embraced the storyline of “Love your neighbour” as a key part of building a community of belonging. During our first chapel, students had a time of worship, followed by a whole-school effort to create food packages for the Mosaic Center.

West - Culture Week January 15-19

West school held the second annual multicultural week of learning and celebration, which included daily themes such as:

- Bring an artifact about your family to share with your class
- *Read Around the World*, learning about different cultures
- *Dress Up Day* - students can wear clothes that remind them of their cultural or family heritage
- *Class Potluck Lunch* - inviting parents to send in food to be shared and sampled by the class as a whole from their culture or loved family recipes
- *French Carnival* - students in every grade were able to learn about some French culture & traditions
- Daily devotions for this week included worship music from around the world

High School - Power of a Feather Project

Our students in Art class were challenged with the idea of the power of a feather. The idea was that through gentleness and gracious reconciliation, we could work together to bring healing to a broken world. This project had students create beautiful stained glass feathers. The whole school shared the work and the learning at a chapel. Travis Enright was a guest speaker. Part of this feather installation will be installed both at the High School and All Saints Anglican Church.

West - Grade 8 Winter Camp

From March 6 to 8, the grade 8 students from West School bravely ventured out to spend time in God’s incredible creation. They were at a camp just outside Calahoo, AB and spent two days and nights (in tents) putting previously learned camping and survival skills into practice, team building, gaining leadership skills, and learning about their own personal resiliency when faced with challenging situations and weather conditions.

West - Lion Crews (formerly Graticrews)

Three times during the school year, students at West gather for an assembly called Lion Crews (cross-grade groupings of students from each grade, Kindergarten through grade 9). This aims to build a community around Christian themes related to our Throughlines.

Northeast - Family Sing Evening February 26

Each week, students in Grades K-4 gather to worship the Lord in a time known as “Elementary Sing.” This year, we shared this experience with our school-wide community by gathering for a Family Worship Night on Monday, February 26, at 6:30 PM in our school auditorium. It was a cold and snowy night, but when the doors opened at 6:15, we had families piling into the auditorium! What a blessing it was to sing and worship our Lord together.

High School - ELA Student Devotional Project

For two years, high school English students have been connecting with Edudeo about a desire to support Christian education mission work across the world. The work culminated in this year's ELA 20 student writing and publishing a devotional book, “Ingredients for the Heart,” to inspire and nourish the soul. The sale of books and baked goods, along with generous sponsors, generated over \$ 4,000 to support schools in Malawi that need to invest in accessibility equipment to make education available to more students. This project was celebrated and used as an inspiration to challenge our students to find their call to serve God through active service during a chapel led by students involved and inspired by the project.

Northeast - Multicultural Day in May

On May 3, we celebrated diversity within our junior high school with a multicultural day event. This is the fifth year that we have hosted this event. In April, JH students, staff and our Pastoral Care Leader met in the Auditorium for Chapel followed by weeks of planning and preparations. The culminating event was a lunch that operated much like Edmonton's well-known Heritage Days Festival, where different countries set up booths/tables that showcased their country/culture while serving up portions of their cuisine. Our students were so excited to share different regions and countries, and parents joined to view the displays and sample cuisine.

High School - Student Course Selection April 2024

Grades 9, 10 & 11 students met in person with either Assistant Principal Mr. Epp or Curriculum Coordinator Mr. Boschman to begin/review their three-year high school academic plans and to choose courses for the next school year. Once this has been completed, the high school can begin the scheduling process for the 2024-2025 school year.

High School - Grade 12 Passion Project Evening May 16

Our grade 12 students attended an evening celebration on May 16, where they shared their passion projects with each other, staff, parents and community members. These projects celebrated how they are playing their role in God's story, using their gifts and talents to enrich the lives of others in our community.

High School - Grade 12 Jasper Trip on May 30 to June 1

Our grade 12 students wrap up their time at ECS with an overnight trip to the mountains. Activities will centre around hiking and spending time in God's creation. Opportunities are created for students to reflect on God's work in their lives and their calling for the future. This experience is also a great opportunity to reflect on the blessing of being a community grounded in Christian education.

Northeast & West - Grade 9 Frontier Lodge Trip in June

This overnight trip is part of the Grade 9 Outdoor Education course. We hope the students grow in their appreciation for God's creation and desire to be good stewards of that creation. The trip will also give them a chance to experience a variety of recreational wilderness activities that they may carry into their adult lives.

Northeast, West, and High School - 3 Campus Wicihitowin

Parents and staff from our 3 ECS campuses came out for soup and bannock and participated in learning about the truth of our country's history in the displacement and colonization of Indigenous peoples. Katie Holubowich, Harold Roscher and Travis Enright responded to questions submitted by parents, guardians, and staff. Our Deep Hope is that we remain committed to engaging in peaceful dialogue to deepen understanding, challenge preconceived ideas, identify biases, and move toward reconciliation to restore the right relationships with our Indigenous brothers and sisters. We provided a safe and welcoming space for expanding our learning as a school community to collectively and actively play our role in truth and reconciliation.

Restorative Practices continue to grow our students and strengthen our community

The Society has supported ECS teachers in being trained in Restorative Practice over the past many years. Not only has it informed and guided our discipline practices at ECS, but we have also used the philosophy to create community. Here are some of the many ways circles are used to create positive relationships and maintain a classroom atmosphere conducive to learning and student safety:

- Classroom circles
 - Checking in, out
 - Developing class norms (co-creating expectations for a safe and welcoming space and classroom community)
 - Conflict resolution - identifying harmful behaviours, seeking forgiveness, moving towards healing and healthy boundaries
 - Identifying lagging skills and maladaptive behaviours
 - Using circles to be proactive; building, repairing, and strengthening relationships/interactions and problem-solving

Absentee Ballot #1 - Election of Board Members

ESCE Annual General Meeting | Date of Meeting: June 4, 2024

Voting Instructions:

There are four vacancies on the board that need to be filled. Indicate your **vote by circling the names of up to four candidates** you wish to elect to the board. You may choose fewer than four.

Motion: To conduct the election of members to the Board of the Edmonton Society for Christian Education

Logan Day
(Three-Year Term)

Melanie Dreger
(Three-Year Term)

Fola Olusoga
(Three-Year Term)

Chelsea Voogd
(One-Year Term)

Submission Instructions:

This ballot must be received at the Edmonton Society for Christian Education by mail, email (scanned or photographed), or in-person by 4:00 p.m. on June 4, 2024.

societyoffice@edmchristian.org

Edmonton Society for Christian Education 14304 - 109 Avenue, Edmonton, AB T5N 1H6

If additional nominations are made from the floor, this will not invalidate the absentee ballots. However, please be aware that you cannot vote for these newly nominated individuals or cast a second vote if you submit this ballot. Included are the board's recommendations for 3-year and 1-year terms. If additional nominations are made from the floor, the candidate with the 4th highest number of votes will receive the 1-year term. This absentee ballot remains valid even if you decide to attend the meeting in person. Incomplete or late ballots will not be counted. Only active members of the Edmonton Society for Christian Education (ESCE) are eligible to vote using this absentee ballot.

Personal information will solely be utilized for membership verification purposes and will not be linked to individual votes.

Voter's Full Name: _____ (Please Print Clearly)

Voter's Email Address: _____

Voter's Phone Number: _____ Voter's Signature: _____

Absentee Ballot #2 - Budget Approval

ESCE Annual General Meeting | Date of Meeting: June 4, 2024

Voting Instructions:

Indicate your vote **circling** approve or disapprove.

Motion: To approve the Edmonton Society for Christian Education's proposed budget for the 2024-2025 fiscal year as presented

Approve

Disapprove

Submission Instructions:

This ballot must be received at the Edmonton Society for Christian Education by mail, email (scanned or photographed), or in-person by 4:00 p.m. on June 4, 2024.

societyoffice@edmchristian.org

Edmonton Society for Christian Education 14304 - 109 Avenue, Edmonton, AB T5N 1H6

This absentee ballot remains valid even if you decide to attend the meeting in person. Incomplete or late ballots will not be counted. Only active members of the Edmonton Society for Christian Education (ESCE) are eligible to vote using this absentee ballot.

Personal information will solely be utilized for membership verification purposes and will not be linked to individual votes.

Voter's Full Name: _____ (Please Print Clearly)

Voter's Email Address: _____

Voter's Phone Number: _____ Voter's Signature: _____