

A New Chapter in an Old Story Capital Campaign for the West School Building Project

Here is the latest news on the West School Building Project which was approved by our members in November.

Fundraising

Society staff and Board members have begun speaking with supporters about the project. We are confident that many of our long-time supporters will donate generously to the campaign and provide leadership gifts for others to follow.

Please read the FAQ on page 4 of this newsletter for the answers to some important questions about the capital campaign. As you read, consider how you might prayerfully participate in this campaign.

Planning Update

Since November our planning committee has debated how the new building can support a 21st century learning environment wherein individual students can do their best work. We have agreed

that in order to accomplish this we need to plan an adaptable building with flexible furnishings.

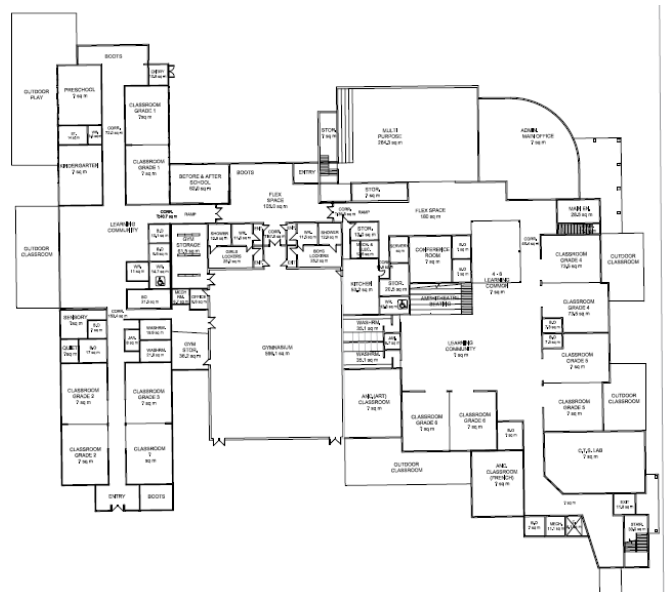
A group of our teachers and staff, together with the architects, recently toured several new schools looking for ideas about flexible construction. We are getting closer to a final concept; an updated first floor layout is shown below. Check out the [Building Project FAQ on our website](#) for more details.

We plan to finalize the concept by April and the schematic drawings by June. Then we will finish the design development and choose a Construction Manager. In the fall the construction documents will be completed and we will open the project to the bidding process. That puts us on track to begin construction in April, 2019 and to open the School to students and teachers in September, 2020.

Please contact us if you have any questions about the construction plans or the Capital Campaign: 780-476-6281 or societyoffice@edmchristian.net

Calendar of Events

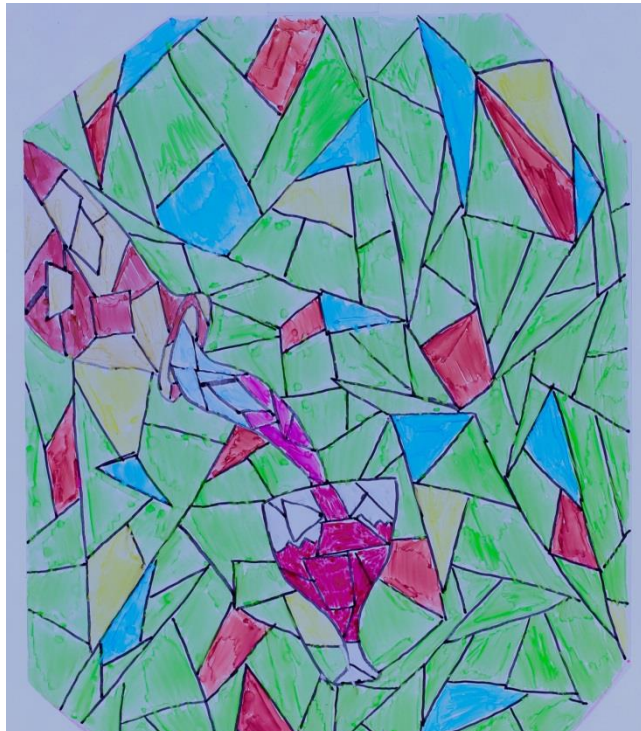
Auction (see page 3)	Saturday, May 12
<i>High School: 4:00 – 8:30 p.m.</i>	
Society Meeting	Monday, May 28
<i>Location TBD: 7:30 p.m.</i>	
NE Grade 9 Celebration	Friday, June 15
<i>Bethel CRC: 5:30 p.m.</i>	
West Grade 9 Celebration	Friday, June 22
<i>West End CRC: 6:30 p.m.</i>	
High School Graduation	Thursday, June 28
<i>Sherwood Park Alliance: 4:00 p.m.</i>	
Last Day of School	Thursday, June 28
First day of School	Tuesday, Sept. 4
Golf Tournament	Saturday, Sept. 8



It Takes a Small City!

It is said that it takes a village to raise a child. If that is true, (yes, it is!) then it must follow that it takes a “small city” to support a Christian School Society, as has been done here in Edmonton for almost 70 years. Make no mistake; God’s work at Edmonton Christian Schools has been accomplished through many years of support from a large number of people. To say that *your* support is important is an understatement; it is *crucial*. We cherish your prayers. We depend on your many, many volunteer hours. We prayerfully steward your donations.

John Eldredge in his book ***Epic: The Story God is Telling and the Role That is Yours to Play*** suggests that human brokenness leads to us losing track of which story we are part of. When that happens or when we adopt one of the many other stories that seem so alluring, we lose direction and lose out on life’s richness. The gifts of a supporting community mean that Edmonton Christian can join parents and the Church in reminding our students of the story that we are part of. It’s a story that stirs hearts and invites us all to play a crucial role. A story with Christ and the cross at its centre.



Water into Wine: Sienna Wolfram’s idea for the entrance of our new West School

It is with confidence in God’s faithfulness that we are planning the next chapter in the story!

What could be more important than inviting, nurturing and empowering innocent young children, energetic “tweens”, boisterous teens and emerging young adults to find their place and stay anchored to God’s beautiful rescue story? Your support has helped us to do that! Thousands of students, past and present, are living lives of renewal in God’s story! (see examples at www.edmchristian.wordpress.com). Your gifts and support have given them buildings to learn in. In just the last dozen years, we expanded and renovated the High School, built the new Northeast

School, and coaxed a “Lion’s Den” out of the dust of a renovation at West School. More recently, that support has seen the schools begin to refurbish classrooms with furniture that recognizes the 21st century learner as one who needs flexibility and collaboration to learn deeply. In a world where all of civilization’s knowledge is carried on devices that fit in our pockets, school is less about knowledge and more about wisdom, character and the skills to apply them in God’s story. Edmonton Christian, in faithfulness, needs to be on the leading edge.

Teachers too have been supported by the “small city” whose members are known as the Edmonton Society for Christian Education. They have been enabled through membership in the Prairie Centre for Christian Education to attend conventions and ***Teaching for Transformation*** workshops aimed at enhancing the educational practices that recognize Jesus as Lord of all things. When new staff members join, resources are put towards helping them to become master storytellers who find God’s story in the Alberta curriculum. All teachers can get support as they move towards the deep, transformative learning that our 21st century learners need.

Edmonton Christian is truly thankful to be part of helping students know God’s story and their place in it. God’s faithfulness through its supporters gives us confidence that God will continue to use us. It is with this confidence and a great deal of excitement that we are planning the next chapter in the story.

Plans are being made for a new building at West. A new building that will make possible the energizing, engaged education that will help the next generation of God’s people to hear the clarion call into the epic story that Eldredge says “*is truer and deeper than any other, and assures us that we will find the meaning of our lives.*”

(Brian Doornenbal)



EDMONTON CHRISTIAN SCHOOLS

25th
Annual

Spring Auction



SATURDAY, MAY 12, 2018

Doors open at 4:00 pm

EDMONTON CHRISTIAN HIGH
14304 109 Avenue, Edmonton



DONATIONS AND VOLUNTEERS NEEDED!

Tax receipts available for new items donated with original receipt

**Donations accepted at the Society Office or
any of our school offices before May 12**

For more information contact MaryAnn-780.476.6281



EDMONTON CHRISTIAN SCHOOLS AUCTION

West School Building Project – Campaign for \$3.5 Million

Frequently Asked Questions

1. Why do we need to raise money for this project? Doesn't Edmonton Public Schools pay for our buildings?

When we joined EPS in 1999 we decided to continue the ownership of our buildings to allow for a more flexible partnership agreement. Since we own the buildings we need to pay for all renovations, additions and capital projects.

2. What will the project cost?

The total cost for renovation and expansion is expected to be \$16 million.

3. How much money do we need to raise?

We need to raise \$3.5 million before we can start construction and we hope to raise at least \$4 million by the end of 2018.

4. Where will the additional \$12 million come from?

We will need to borrow up to \$12 million from our bank and other lending institutions.

5. Who will you ask to donate money to this project?

We will ask all members of our supporting community to make a 3 year pledge. This includes parents, grandparents, alumni, staff and supporters. How can you help!?

6. When will the Capital Campaign begin?

Starting on September 15 we will begin the public phase of the campaign, asking all of our supporters to help out with **a 3 year commitment.**

7. What are the ways that I can donate?

You can make a donation in several ways:

- a. An immediate gift
- b. A monthly donation for 3 years
- c. An annual donation for 3 years
- d. Any other way you'd like!

8. What are the methods I can use to donate?

- a. Cheques payable to ESCE
- b. Auto withdraw every month from your bank account
- c. Post-dated cheques
- d. Credit card
- e. Donation of Shares
- f. Estate gifts and Life Insurance policies

9. Is my donation tax deductible?

Yes! In Alberta, your donation is 50% tax deductible. **EG:** a donation of \$10,000 results in a tax refund of \$5,000.

10. What is the benefit of a Donation of Shares?

A donation of shares to a charitable organization such as the Edmonton Society for Christian Education means that you will not be taxed on any capital gain on those shares. **EG:** If you paid \$25,000 for some shares, they appreciated to \$30,000 over several years, and then you donate the shares to us, you will not be taxed on the \$5,000 Capital Gain. Furthermore, you receive a tax receipt for the entire \$30,000 donation and get a \$15,000 tax refund. Call us for more details on how you can donate in this way.

11. How will I know when it is time to make a donation or a pledge?

We will invite everyone to make a pledge beginning in mid-September, 2018. Keep your ears peeled for emails and announcements of various kinds!

Campaign Timeline

April – September, 2018:

- **Fundraising begins.** Our goal is to raise \$2 million in gifts and pledges.

September 15 – December 31:

- **Public fundraising campaign**
Our goal is to raise an additional \$1.5 million in gifts and pledges for a total of at least \$3.5 million.

Spring of 2019:

- Financing is arranged
- **Construction** begins!