

REMEMBER MY NAME

Time and Place

The play takes place during World War II, 1942-45, in Southern and South Central France.

Act I

Scene 1. A basement hotel room - Marseilles - November 1942

Scene 2. A carriage in a French train - two days later

Scene 3. Madame Barbière's kitchen - St. Laurent des Pins

Scene 4. The village school - January 1943

Scene 5. The town hall - March 1944

Scene 6. Madame Barbière's kitchen - June 1944

Act II

Scene 1. Outdoor café - June 1944

Scene 2. Madame Barbière's kitchen - a half-hour later

Scene 3. Market Square - Le Puy - the next day

Scene 4. Madame Barbière's kitchen - August 1944

Scene 5. Prison Cell - Le Puy - August 1944

Scene 6. Madame Barbière's kitchen - mid-May 1945

There will be an intermission between Acts I and II.

Refreshments will be sold in the lobby.

Drinks are not permitted in the theatre!

Please note: Recording of any kind is not allowed in the theatre -- no photos, no video. Please TURN OFF any cell phones, pagers, or anything else that might make noise or emit light. Even vibrating phones are disruptive, and it's good form to let everyone enjoy the show without distraction.

Special Thanks


...to Dorothy Visser & Lynda Scheper for taking care of ticket sales

...to Helen Krol for arranging the student matinees

...to our wonderful parents who brought meals to starving thespians

...to La Cite Francophone, especially Nicole, for letting us work in a such a fine theatre

...to Samuel French Inc. for giving us the rights to this great play!



Edmonton Christian High School presents
A stageplay by Joanna Halpert Kraus

Remember My Name

March 15, 17, 18, 2017
Doors open at 7:00 pm
Show begins at 7:30 pm
La Cite Francophone 8627 91 Street
Adults \$15, Students/Seniors \$10
To order tickets call (780) 408-7945
or purchase at the door
Produced by special arrangement with Samuel French



Edmonton Christian High School is pleased to present a wartime drama that is at once sobering, heart-warming and thought provoking. *Remember*

My Name, by Joanna Halpert Kraus, is a prize winning drama that tells of a young girl's survival in wartime France and the courage of those who protect her from the Nazi Holocaust. In our current climate of political, religious and racial instability, this play powerfully hits home. It reminds us of the good in the midst of evil, of hope during times of despair, of humanity in the presence of inhumanity. It reminds us to look for those who stand up for what is right when so much seems to be going wrong. It reminds us to be the ones who will risk their lives for others, for all of God's people.

Technical Crew



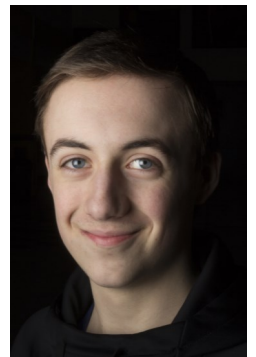
Maddie Hite
Props/Backstage



Abbi Jorritsma
Hair/Makeup



Gavin Schalk
Lights



Keith Zuchotzki
Sound

Directing Team



Suzanne Knol



Tim Epp



Nick Boschman

Ryan Verveda—*Hans Schmidt*

This is Ryan's third production at ECHS. He brings a tenacious commitment to fully uncovering his character. Ryan's natural compassion and kindness makes his portrayal of Lt. Hans Schmidt all the more impressive. He plans to attend engineering at the U of A next fall.



Noah Wilde—*Gérard La Salle*

Noah was a late addition to our play, but has readily embraced the role of Gérard. He has developed a nuanced character who desires to do what's right while under occupation. Noah's passion for *The Office* and film is eclipsed only by his love for English Language Arts at ECHS.

Stage Managers

Joy Azer
Stage Manager



Jason Galang
Assistant Stage Manager



Teigyn Huculak
Assistant Stage Manager



Mikaela Wegner
Assistant Stage Manager



The Cast

in order of appearance

Rachel Simon/Madeleine Petit
Léon Simon
Pauline Simon
Père Antoine
Yvette Reynaud
Gérard La Salle
Marie-Thérèse Barbière
Suzanne Fleury
Hans Schmidt
Julien Delacour

Emma Hansen
Jake Thorsteinson
Michal Reinholdt
Jarin Ten Hove
Charissa Kleckner
Noah Wilde
Neso Ihejirika
Christina Evans
Ryan Verveda
Caleb Schoepp

The Crew

Directors

Suzanne Knol
Tim Epp

Costumes

Charissa Kleckner
Suzanne Knol

Assistant Director

Nick Boschman

Props

Maddie Hite
Teigyn Huculak

Stage Manager

Joy Azer

Lights

Gavin Schalk

Assistant Stage Managers

Jason Galang
Teigyn Huculak
Mikaela Wegner

Sound

Keith Zuchotzki

Set Construction

Rob Hofstede
ECHS Construction Class
ECHS Drama Class

Hair and Makeup

Abbi Jorritsma

Posters

Tim Epp

Programs

Nick Boschman

Audio/ Visual Recordings

Nick Boschman
Tim Epp

Christina Evans—*Suzanne Fleury*

This is Christina's third production at ECHS. Christina is known for her enthusiasm, desire to turn all plays into musicals and being "so over it". Christina is a natural talent, and she has done a wonderful job of fully bringing out the vim and vigour of Suzanne.



Emma Hansen—*Rachel/Madeleine*

This marks Emma's third production at ECHS. Emma has proven to be a versatile performer, capable of a variety of character types. She is a joyful and conscientious worker and has anchored the play through her development of a convincing 12yr old on an incredible journey.

Neso Ihejirika—*Mme. Barbière*

"Remember My Name" is Neso's second production at ECHS. Neso's theme word for this play is "brusque", which she has embraced wholeheartedly. She brings joy and passion to her craft and her ability to develop a convincing character is fully evident in this play.



Charissa Kleckner—*Yvette Reynaud*

Charissa is pleased to be in her first production at ECHS. Charissa is passionately creative and embraces getting into character in her daily life. Charissa has also contributed her talents to the development of costumes and props. Her ability to humanize the character of Yvette is testament to her dedication to her craft.



Michal Reinholdt—*Pauline Simon*

This is Michal's first large-scale production and she has proven great determination to discover the role of Pauline. Michal is always willing to help out in all aspects of the production and is excited to be part of this play. Her positive attitude and encouragement to others has been a key factor in the success of our play.

Caleb Schoepp—*Julien Delacour*

This is Caleb's second production at ECHS. The heroic and dashing leader of the French rebellion has been an intense dramatic stretch for Caleb but he has persevered. Caleb's leadership abilities and natural charisma have been essential to the play, and his pursuit of Suzanne.



Jarin Ten Hove—*Père Antoine*

This is Jarin's first production at ECHS. With a resoundingly deep voice, Jarin brings warmth and strength to the role of Père Antoine. He has created a compassionate character in a time where empathy was difficult to find. His passion for and execution of puns is unrivalled.

Jake Thorsteinson—*Léon Simon*

Jake is in his first production at ECHS. In addition to his involvement in the play, Jake serves as Student Council co-President and local Donald Trump impersonator. Though new to theatre, he is a natural. Jake effectively portrays the full personality and emotion of Léon.

